



Welcome to EI

Making the Case for Specially
Trained Service Coordinators

Pam Bankes

Service Coordinator
for CMSU Counties



DaniELLE mENDEZ

El Coordinator for
CMSU Counties



Tara Nikou

Choices for Children
Coordinator &
Coordinator of
Children's Services




Mary Ann Stefko

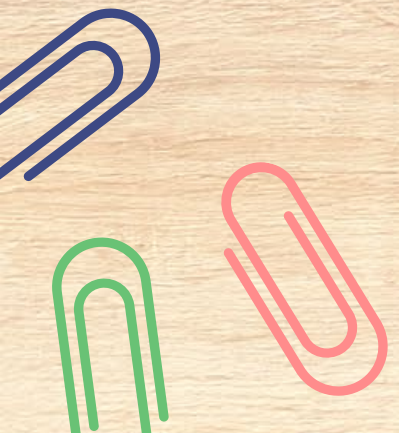
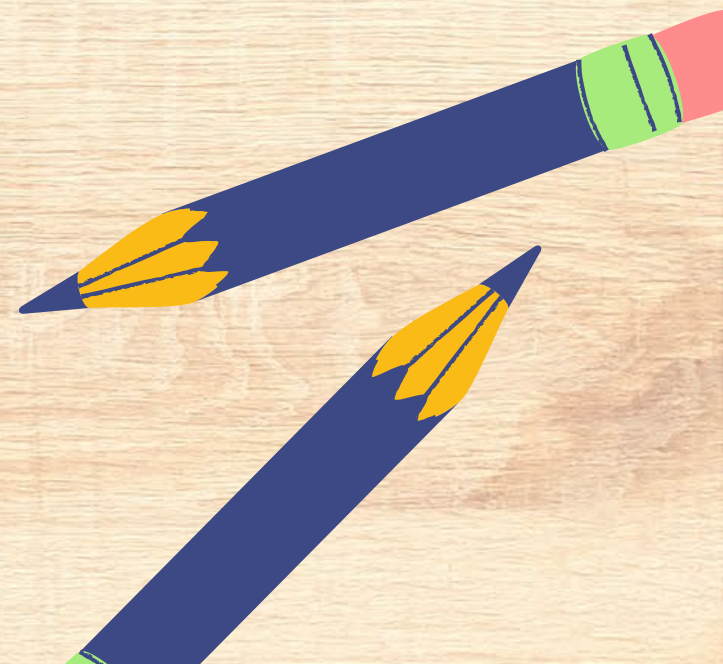
TOD serving birth to
three families in North
Eastern Pennsylvania



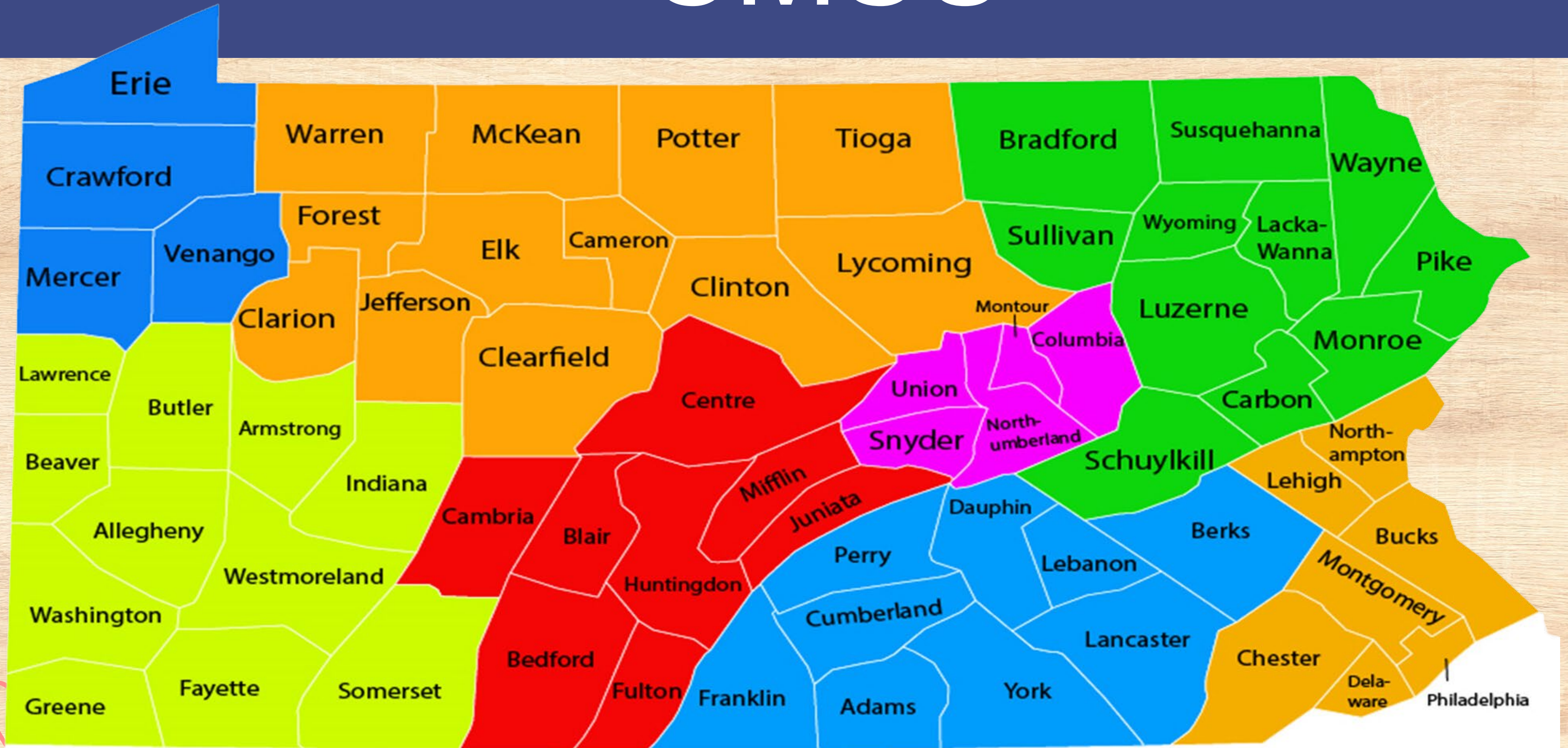
Serving CMSU!

A yellow spiral notebook graphic is positioned to the left of the text.

Columbia
Montour
Snyder
Union



CMSU



facts about CMSU

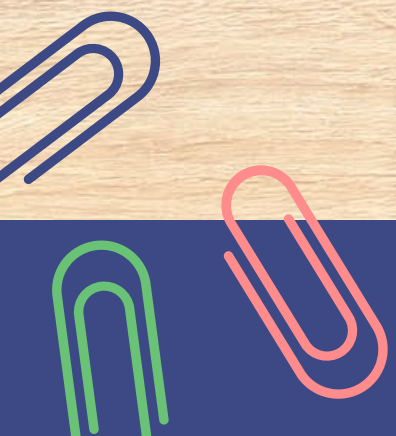
Has a total population of 169,021 with 8,356 under age 4.

EI Program is divided by Northumberland county.

CMSU is mostly rural. There is limited public transportation.

EI serves 5.33% of the population.

The Susquehanna River borders all four counties.



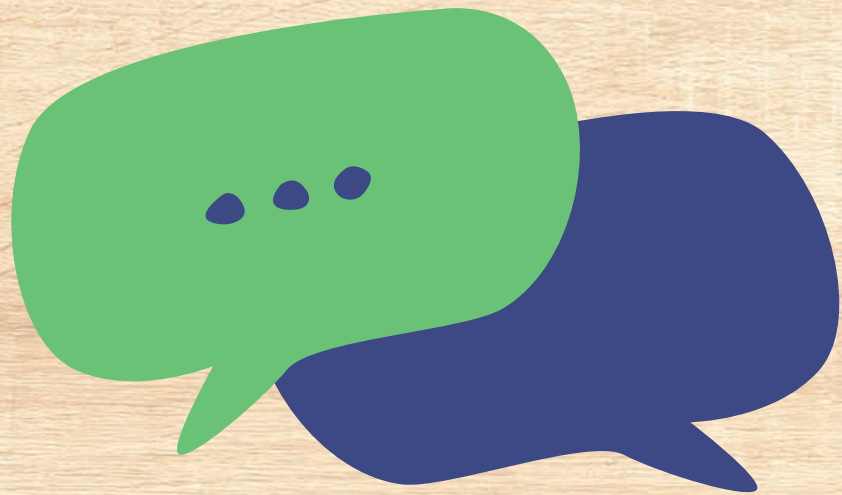
Race and Ethnicity REPORT

as of 2/5/25

	CMSU	Pennsylvania
Number of Children in EI	179	25,596
Black or African American	0.56%	12.69%
Other	1.685%	4.88%
Unknown	18.99%	8.70%
White	70.39%	54.60%
Hispanic	8.38%	15.88%

Family Survey Results

for Language
2023 - 2024



Population

ENGLISH

100%

OTHER

0%

SPANISH

0
%

Respondents

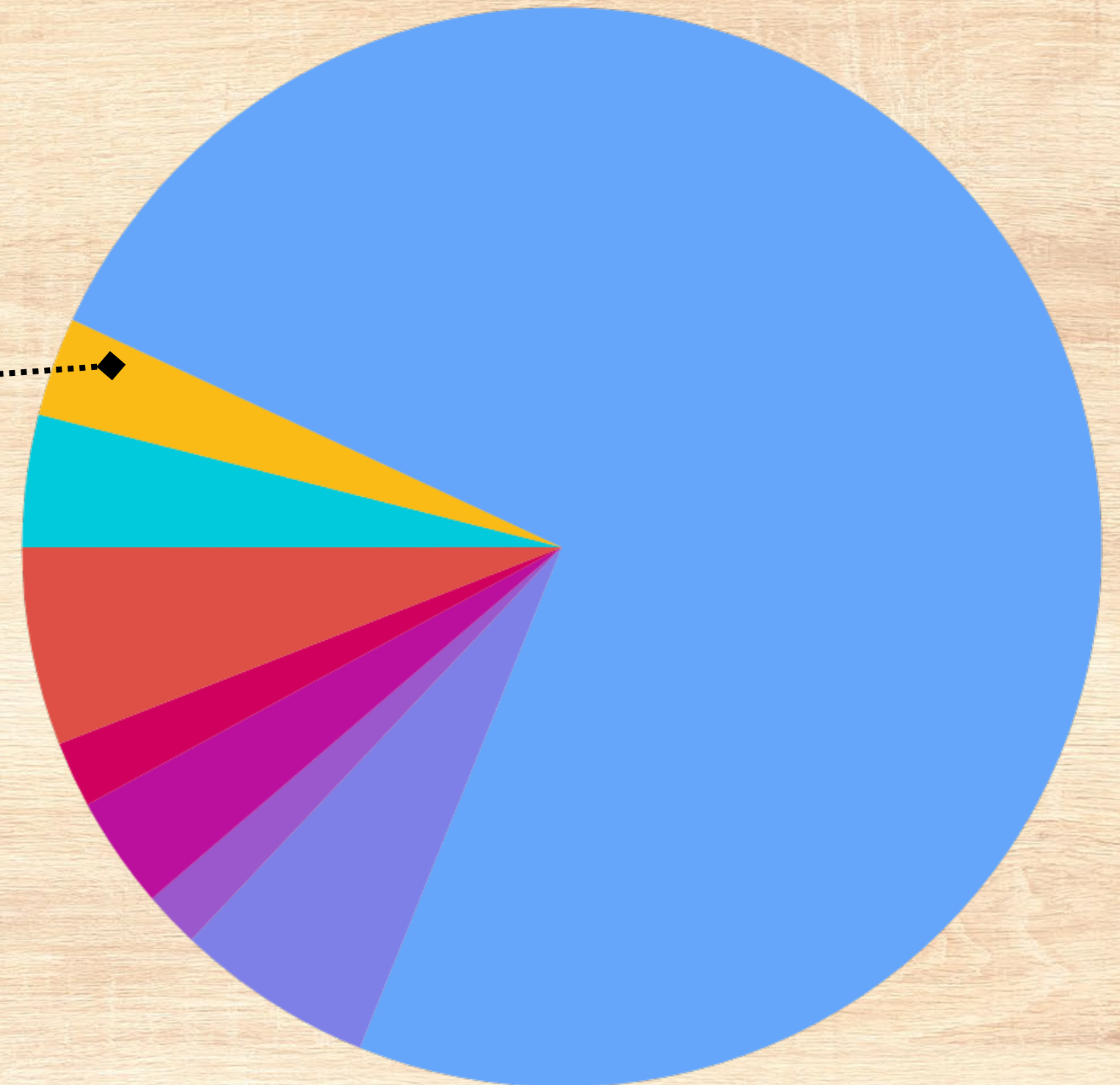
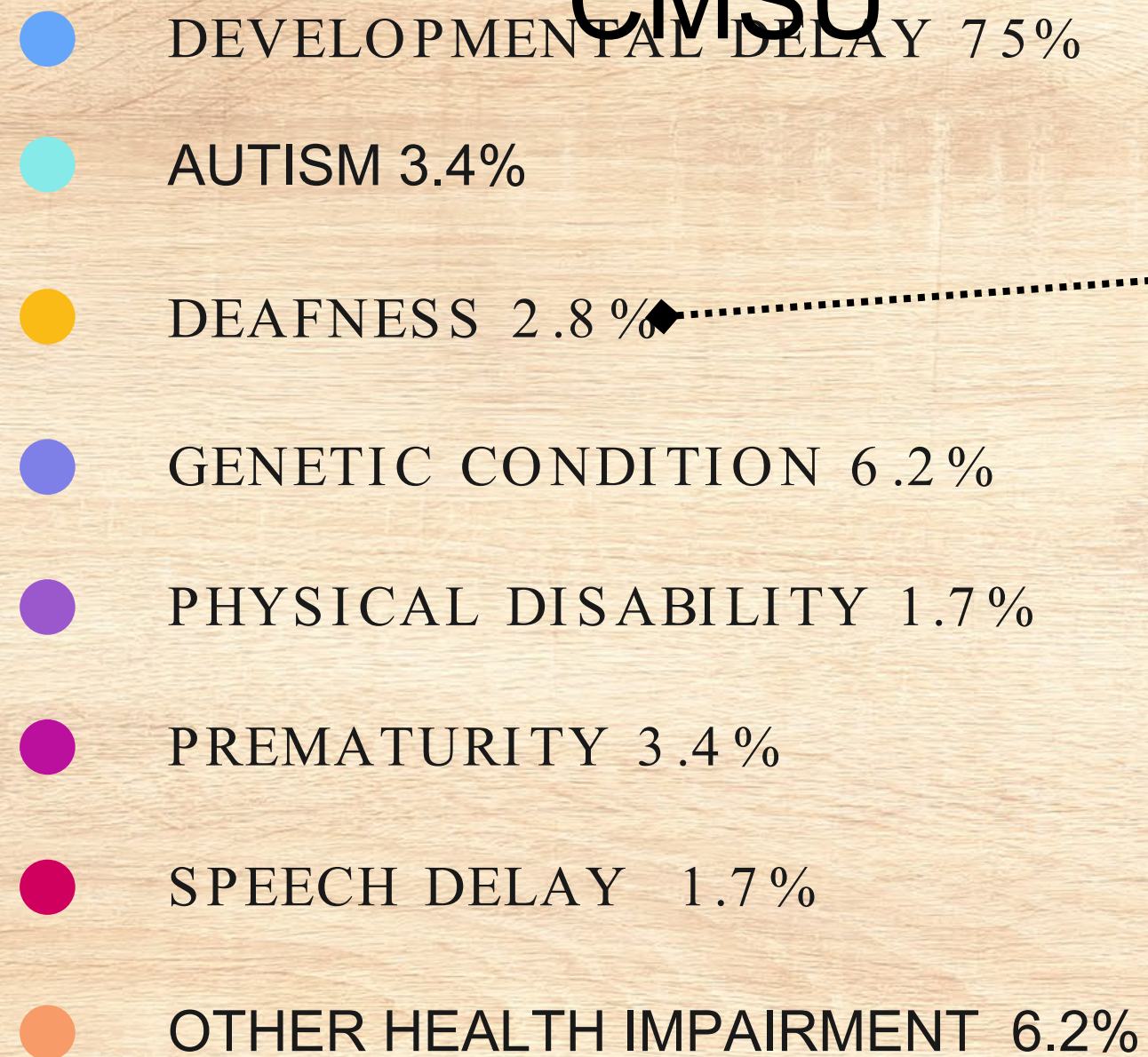
94%

1.6%

4.6%

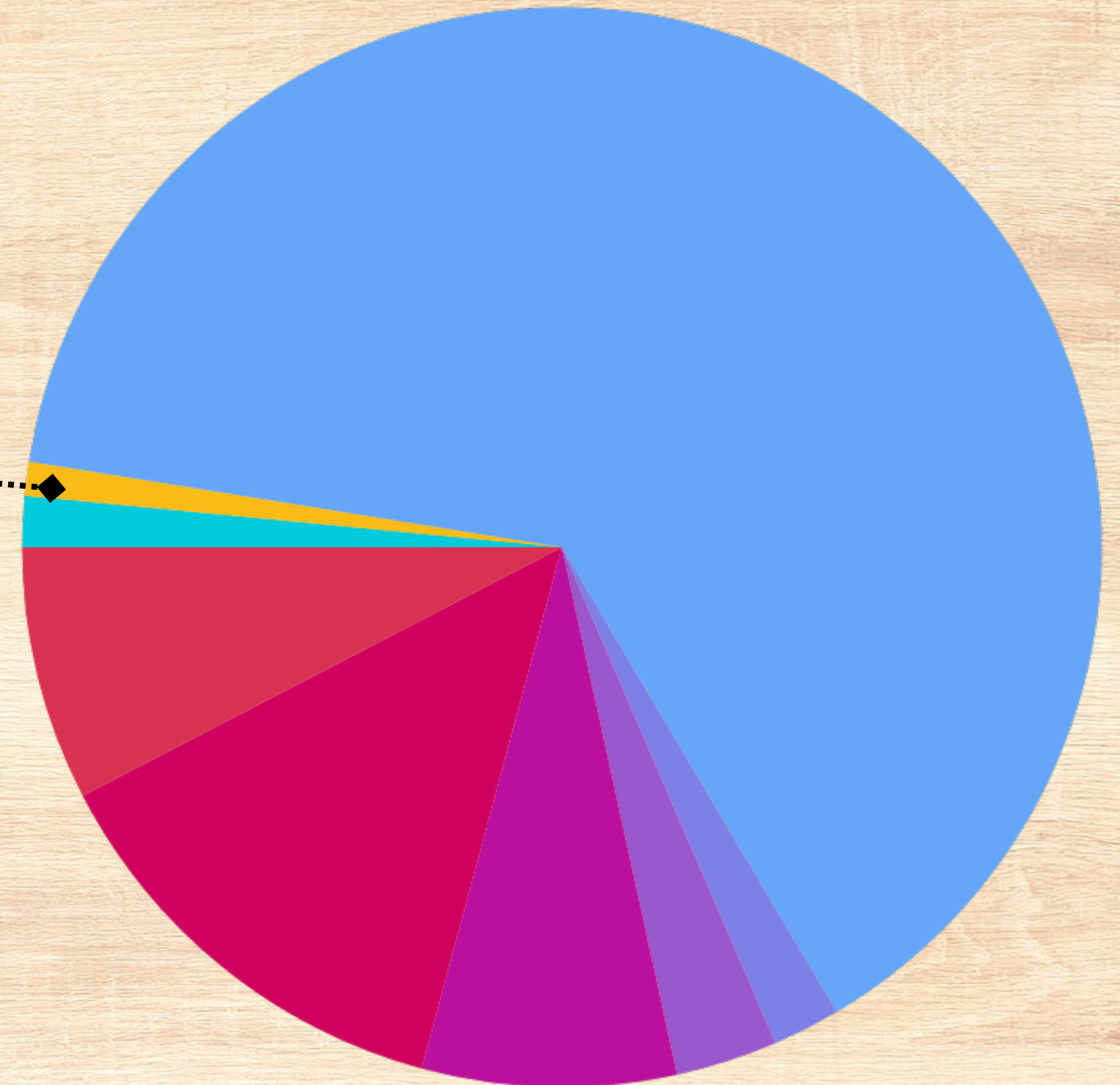
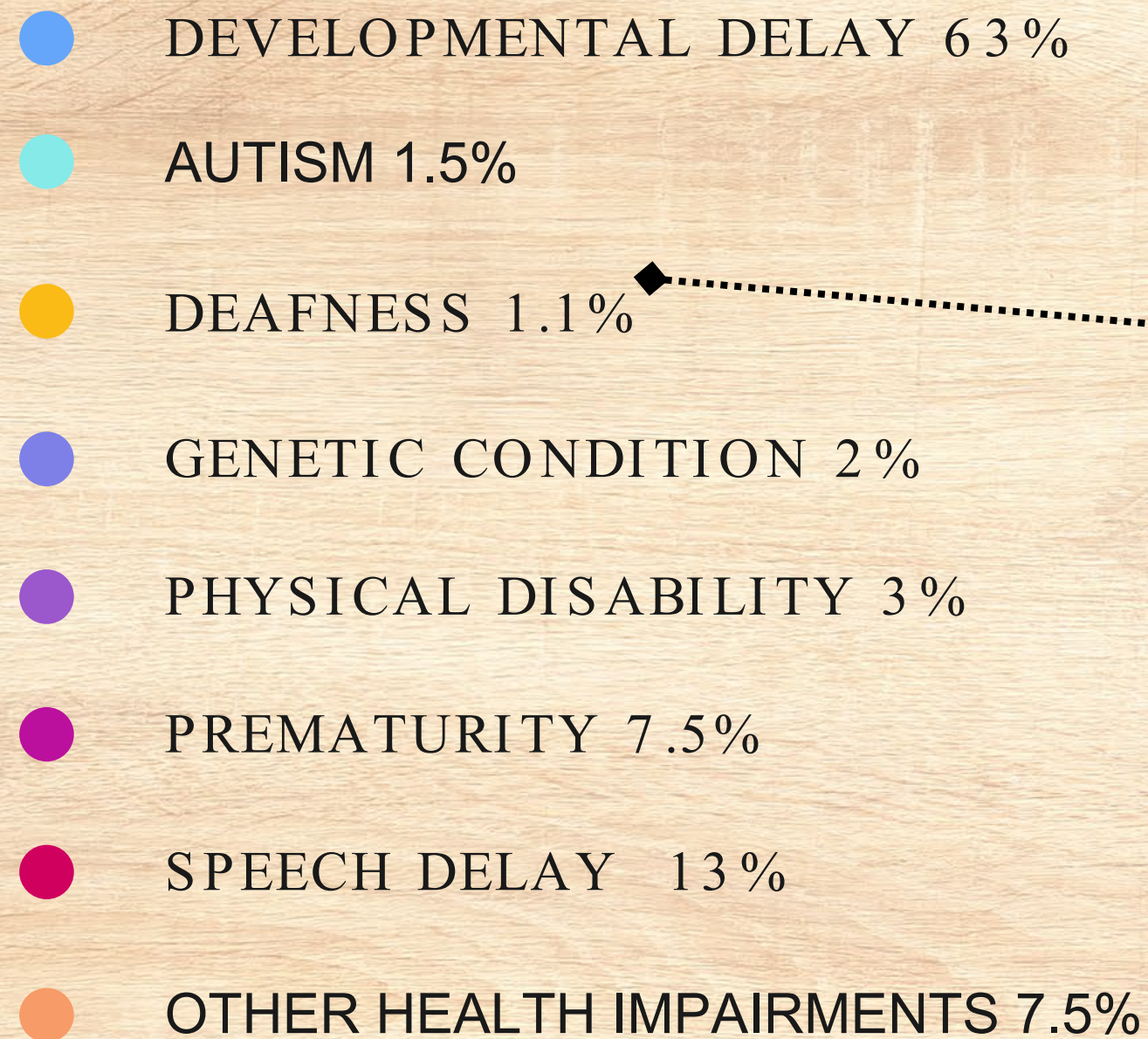
Other ExceptionALITY

178 TOTAL FOR
CMSU



Other ExceptionALITY

22,012 TOTAL FOR PA



CMSU's Deafness Data

Gender Assigned
at Birth
2 Male
6 Female

Ethnicity:
Hispanic: 2
Non- Hispanic: 6

County:
Columbia: 3
Montour: 1
Synder: 0
Union: 4

Race
White: 4
Unknown: 3
American Indian: 1

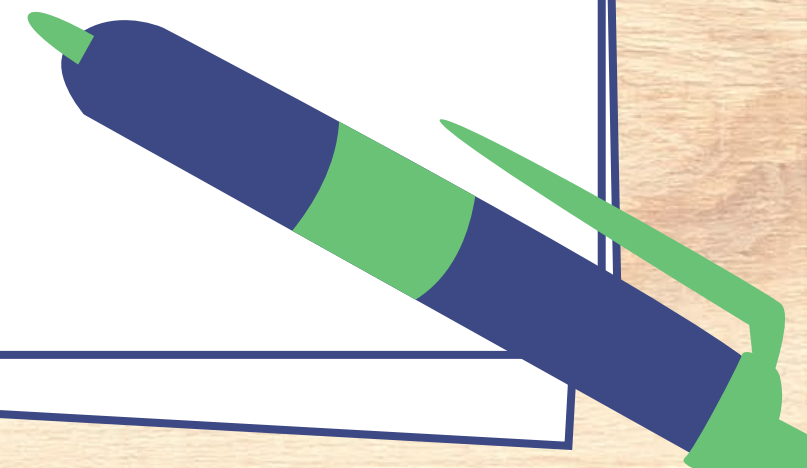
Language
English: 8
PA Dutch: 4



IdentIFYING THE NEED

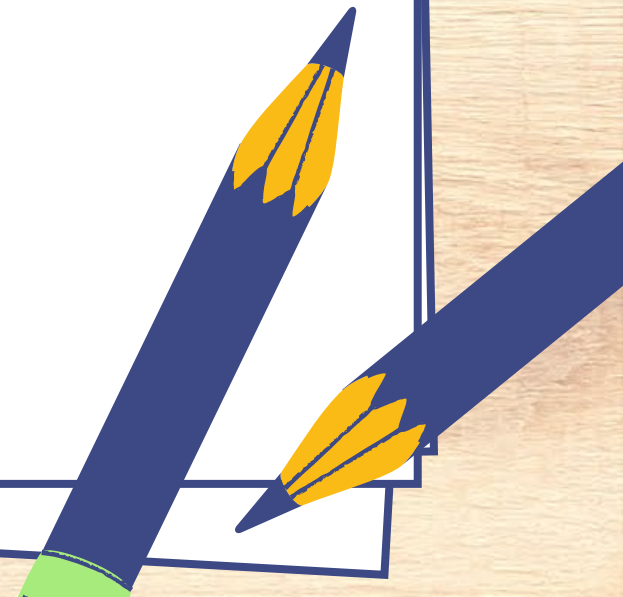
OCDEL- Announcement EI 24 #03

Recommendations for Infants, Toddlers, and
Preschool Age Children Who are Deaf or Hard of
Hearing



Identifying THE NEED

- Pandemic Difficulty Finding Employees
- Inconsistencies with Service Coordinators
- Lack of Internet
- Lack of Public Transportation
- Lack of Additional Supports and Services
- Shortage of ToD's
- Travel involved for in person services



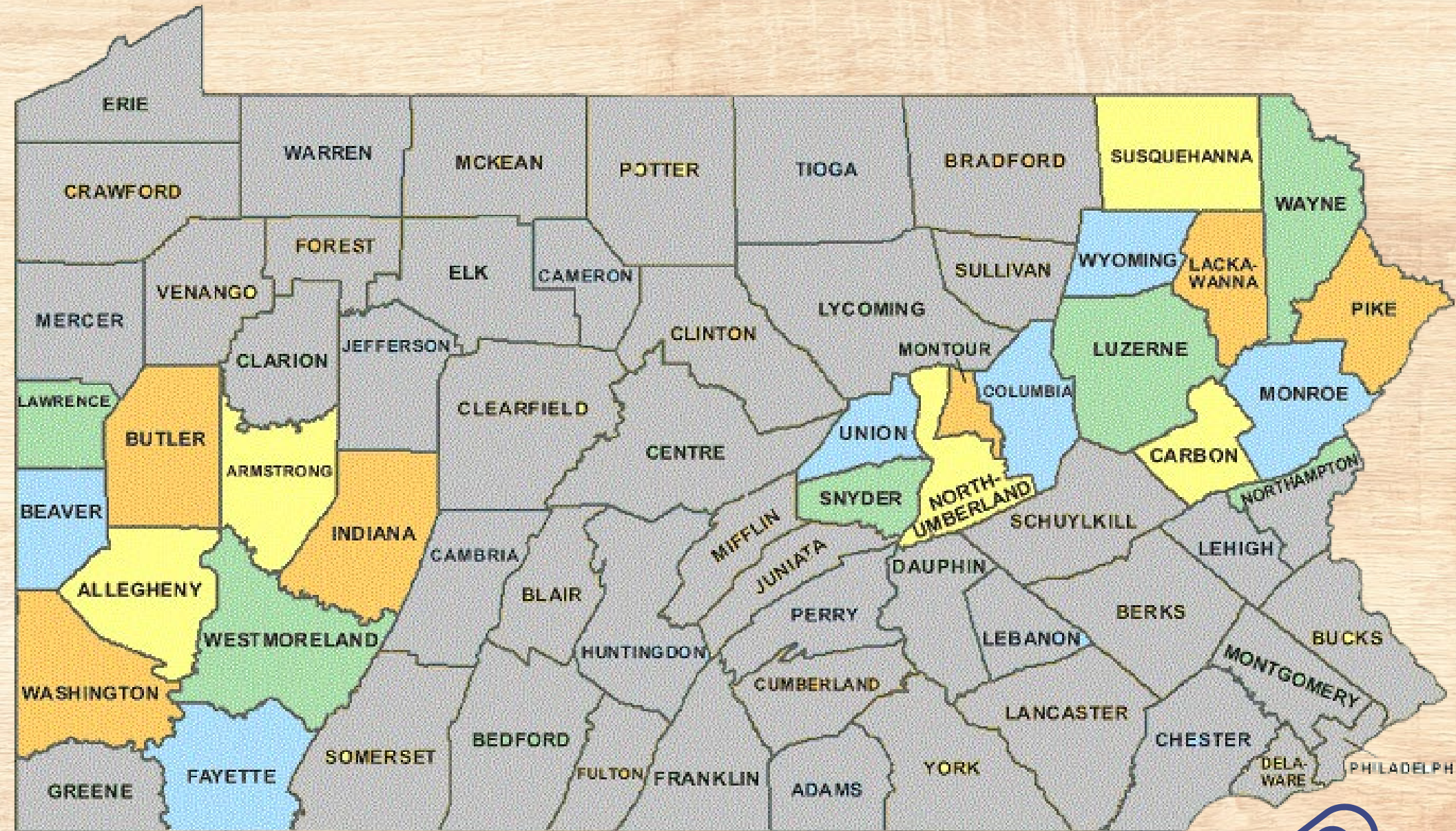
Solve #1

Find a
Teacher of the Deaf



CHOICES FOR CHILDREN

**Birth to Three Provider
since 1975
5 ToD's
Located in
Northeast & Southwest
Pennsylvania**



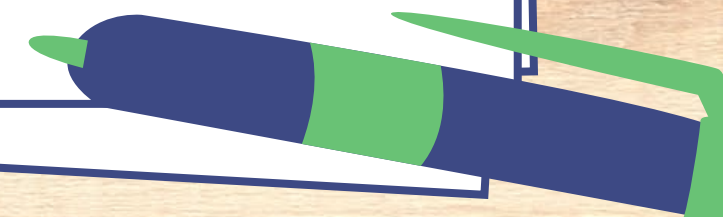
Solve #2

**Hire a Service
Coordinator who'd be
willing to train-up**



My SEcond Act

- How did I get here?
 - Went back to school at 48
- Graduated with Bachelors in 20 14 at 50
- Started with CMSU in 20 16
- Did mental health until 20 23, then went to EI
- Chose this position at first staff meeting (What was I thinking??)
- Why did I choose this?
 - Was on my “bucket list”
- Could I learn all the things I needed to know: Can you really teach an old dog new tricks??



SPeclialized training

PaTTAN course:
Interventions for
Children with
Combined Hearing
and Vision Loss

Fresno State's
Scarlett's Park
Conference

Took
sign language
classes

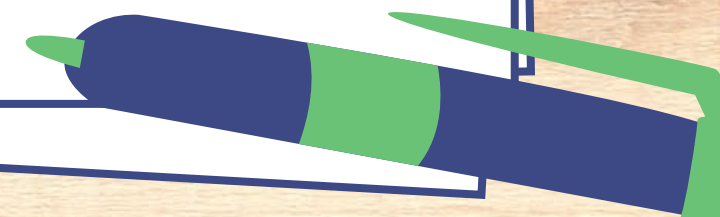
Attended
audiology
sessions with
family and ToD

Family Tool Kit Training

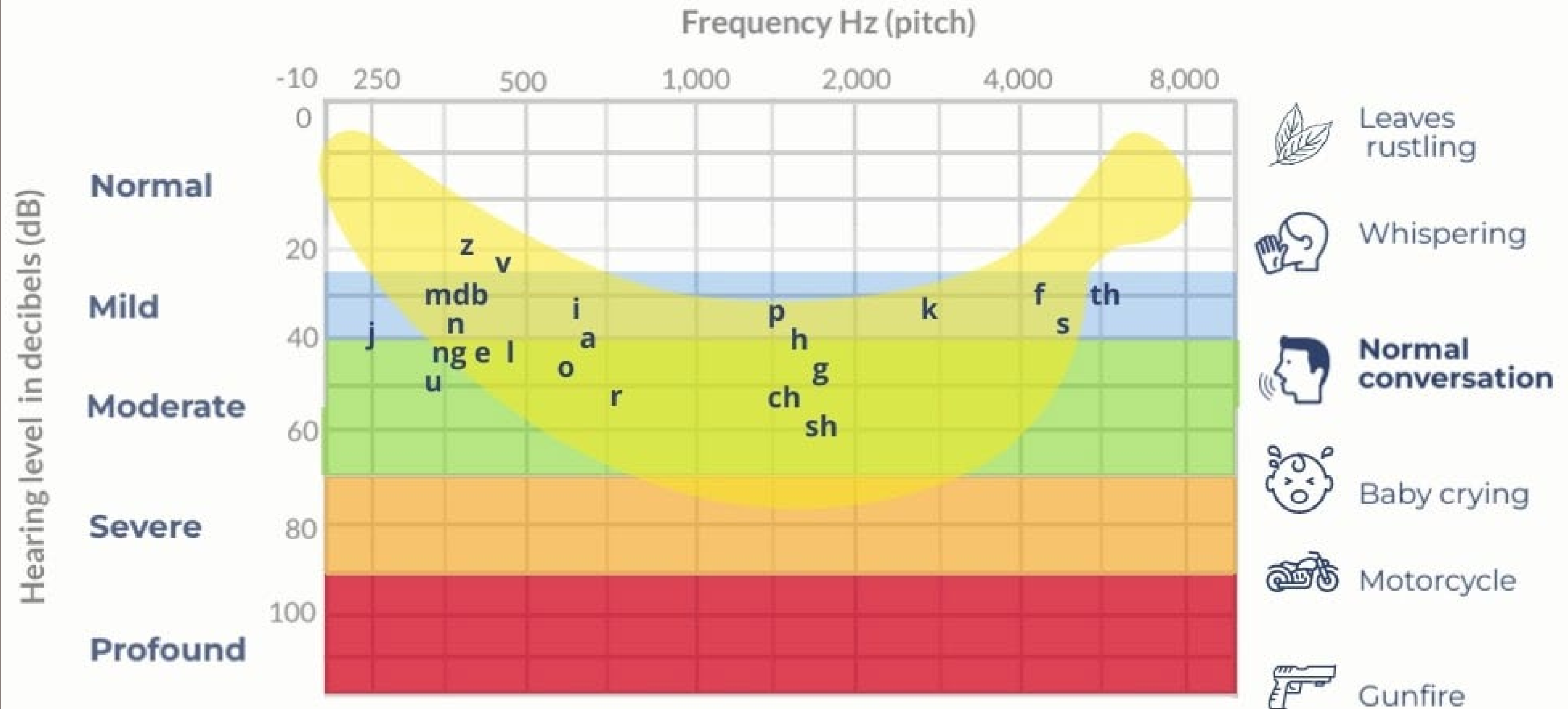
Great Start
Low Incidence
Institute

UTILIZING TRAINING

- Using sign language with the children
- Supporting ToD and families
 - Brainstorming solutions
 - Example: broken hearing aids/ tore pilot cap
 - Advocating
- Work closely with other providers
- Educating other families about hearing loss



Hearing loss and the 'speech banana'





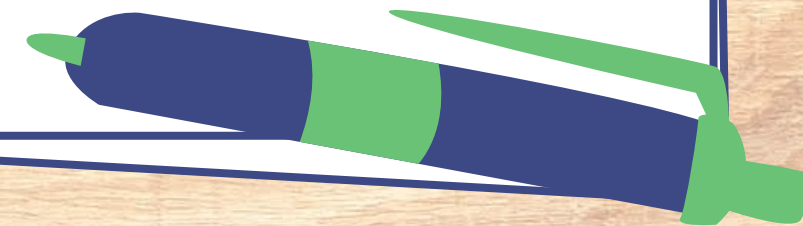


What's Next?



learn
more

- Continue to study sign language
- Continue to attend conferences
- Continue to learn about technology
 - Hearing Aids
 - Cochlear Implants
 - Accessories





Thank you!

- [Short Video from a parent's perspective...](#)